



**ZOOM INTO SPACE**

**sequoia**  
kids media

# MARS QUIZ!



9781649962034

If you get stuck, all the information you need to answer the questions is in your *Zoom Into Space Mars* book.

**1: What is Mars?**

- a) An asteroid
- b) A planet
- c) A moon

**2: How big is Mars?**

- a) The same size as Earth
- b) Three times the size of Earth
- c) Smaller than Earth

**3: What is the surface of Mars covered with?**

- a) Water
- b) Sticky green slime
- c) Reddish-brown dust

**4: What color is the sky on Mars?**

- a) Pinkish-orange
- b) Black
- c) Bright blue

**5: How long is a year on Mars?**

- a) 365 Earth days
- b) One Earth day
- c) 687 Earth days

**6: What is the name of Mars' giant volcano?**

- a) Olympus Mons
- b) Mount Everest
- c) Mount St. Helens

**7: How tall is Mars' giant volcano?**

- a) 100 miles (160 km) tall
- b) 14 miles (22 km) tall
- c) 14 feet (4.3 m) tall

**8: If the volcano was set down on Earth, what could it cover?**

- a) All of Arizona
- b) All of the United States
- c) The Atlantic Ocean

**9: How deep is Mars' huge canyon?**

- a) Three times as deep as the Grand Canyon
- b) 100 times as deep as the Grand Canyon
- c) Not as deep as the Grand Canyon

**10: What are Mars' two moons called?**

- a) KitKat and Snickers
- b) Ganymede and Callisto
- c) Phobos and Deimos

**11: Which statement is true?**

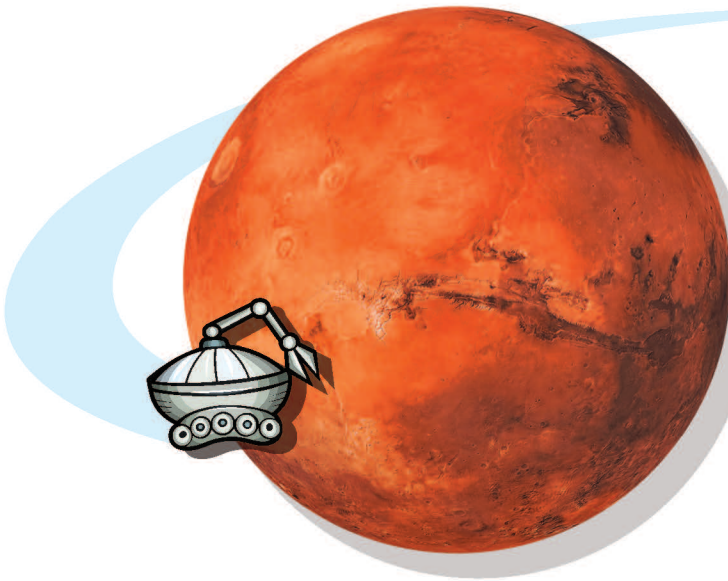
- a) Mars is the nearest planet to the Sun.
- b) Mars is the fourth planet from the Sun.
- c) Mars is the seventh planet from the Sun.







9781649962034



**12: Who is Mars named after?**

- a) The person who invented the candy bar
- b) The Roman god of chocolate
- c) The Roman god of war

**13: How long does it take Mars to rotate, or spin, around once?**

- a) Nearly 25 hours
- b) Two weeks
- c) 25 days

**14: Which of these statements is true?**

- a) Venus is smaller than Mars.
- b) Mars is smaller than Jupiter.
- c) Mars is farther from the Sun than Uranus.

**15: Which of these statements is false?**

- a) Mars is a very hot planet.
- b) Mars is a very dusty planet.
- c) Mars is a very cold planet.

**16: How many astronauts have visited Mars?**

- a) 2
- b) 12
- c) 0

**17: Which of these statements is false?**

- a) The *Curiosity* rover is a robot.
- b) The *Curiosity* rover is a new type of car.
- c) The *Curiosity* rover landed on Mars.

**18: How big is the *Curiosity* rover?**

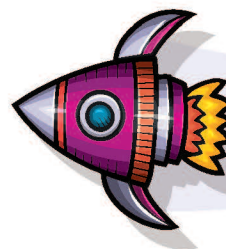
- a) As big as Arizona
- b) As big as a school bus
- c) As big as a car

**19: What did *Perseverance* carry to Mars?**

- a) An astronaut.
- b) A helicopter called *Ingenuity*.
- c) Lots of rocks from Earth.

**20: Which of these statements is true?**

- a) There was once water on Mars.
- b) There are trees growing on Mars.
- c) There are giant footprints on Mars.



2: c 4: a 6: a 8: a 10: c 12: c 14: b 16: c 18: c 20: a  
1: b 3: c 5: c 7: b 9: a 11: b 13: a 15: a 17: b 19: b

ANSWERS