



ZOOM INTO SPACE

sequoia
kids media



NEPTUNE QUIZ!

If you get stuck, all the information you need to answer the questions is in your *Zoom Into Space Neptune* book.

9781649962072

1: What is Neptune?

- a) A moon
- b) A planet
- c) A dwarf planet

2: How many moons does Neptune have?

- a) 203
- b) At least 14
- c) 3

3: Which statement is false?

- a) Neptune is the eighth planet from the Sun.
- b) Neptune is the farthest planet from the Sun.
- c) Neptune is the seventh planet from the Sun.

4: Which statement is true?

- a) Neptune is covered with volcanoes.
- b) Neptune is covered with trees and other plants.
- c) Neptune is a huge ball of icy gases and liquids.

5: How long is a year on Neptune?

- a) About 3 Earth years
- b) About 165 Earth years
- c) About 65 Earth days

6: How fast do winds on Neptune blow?

- a) Up to 150 miles per hour (240 km/h)
- b) Up to 1,500 miles per hour (2,400 km/h)
- c) Up to 15 miles per hour (24 km/h)

7: How many years did it take Voyager 2 to reach Neptune?

- a) 2 years
- b) 12 years
- c) 20 years

8: Which statement is false?

- a) Neptune is a very hot planet.
- b) Neptune is a very stormy planet.
- c) Neptune is a very cold planet.

9: How long does it take Neptune to rotate, or spin around, once?

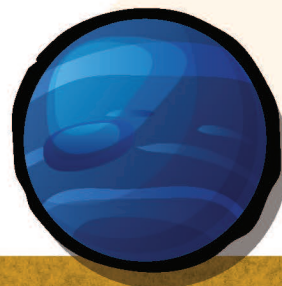
- a) 10 minutes
- b) About 20 Earth days
- c) About 16 Earth hours

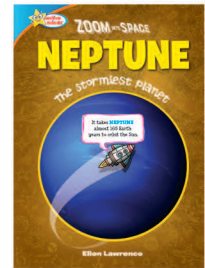
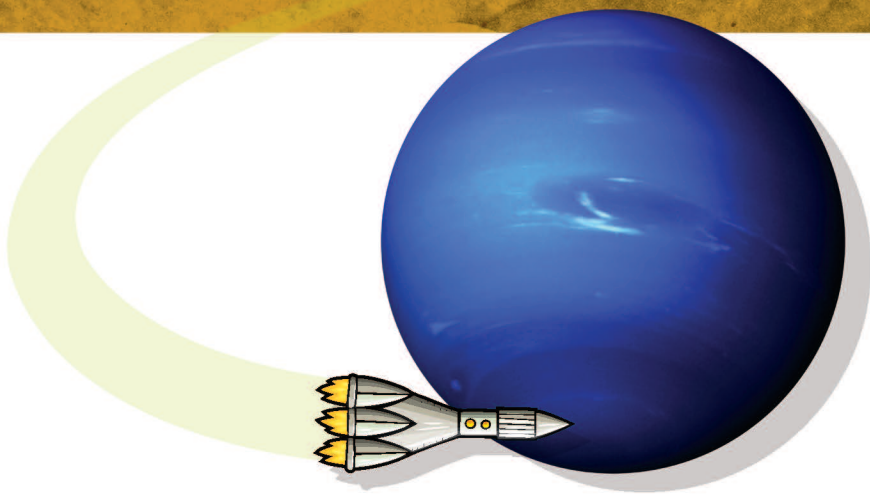
10: Who or what is Neptune named after?

- a) The Greek god of the sky
- b) A submarine in a James Bond movie
- c) The Roman god of the sea

11: What discovery did Voyager 2 make?

- a) Huge rocks on Neptune that spell "Greetings"
- b) Several rings and five more moons circling Neptune
- c) A mountain on Neptune 10 times taller than Mount Everest





9781649962072

12: Which of these statements is false?

- a) Probes have found life on Neptune's moon Triton.
- b) Triton has volcanoes that blast icy liquid into the sky.
- c) Liquid from Triton's volcanoes freezes and falls as snow.

13: How many astronauts have flown to Neptune?

- a) 0
- b) 20
- c) 5

14: What do scientists think the center of Neptune might be made of?

- a) Hot, melted rock and metal
- b) Icy liquids
- c) A ball of rock and ice

15: When was Neptune discovered?

- a) 1989
- b) 2006
- c) 1846

16: What is the Great Dark Spot?

- a) A large ice volcano at Neptune's north pole
- b) A huge, dusty desert at Neptune's south pole
- c) A giant hurricane on Neptune

17: Which statement is true?

- a) Neptune is larger than Earth.
- b) Neptune is larger than Jupiter.
- c) Neptune is larger than Saturn.

18: What color is Neptune?

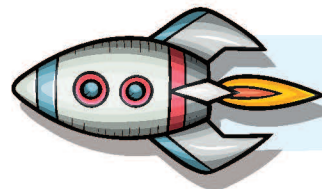
- a) Green
- b) Red
- c) Blue

19: Which statement is false?

- a) Neptune is farther from the Sun than the asteroid belt.
- b) Neptune's journey around the Sun is shorter than Earth's.
- c) Neptune's journey around the Sun is longer than Earth's.

20: Which statement is false?

- a) Neptune is about four times wider than Earth.
- b) The Great Dark Spot is bigger than Earth.
- c) Neptune has canyons deeper than the Grand Canyon.



2: b 4: c 6: b 8: a 10: c 12: a 14: c 16: c 18: c 20: c
1: b 3: c 5: b 7: b 9: c 11: b 13: a 15: c 17: a 19: b