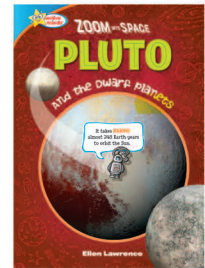




**ZOOM INTO SPACE**

**sequoia**  
kids media



# PLUTO QUIZ!

If you get stuck, all the information you need to answer the questions is in your *Zoom Into Space Pluto* book.

9781649962089

**1: What is Pluto?**

- a) A planet
- b) A dwarf planet
- c) An asteroid

**2: How wide is Pluto?**

- a) 1,430 miles (2,302 km) wide
- b) 250 miles (402 km) wide
- c) 600 miles (966 km) wide

**3: How long does it take Pluto to rotate, or spin around, once?**

- a) About 203 Earth days
- b) About 6.5 Earth days
- c) 2 Earth hours

**4: How long is a year on Pluto?**

- a) Nearly 10 Earth years
- b) About 1 million Earth years
- c) Nearly 248 Earth years

**5: What is the surface of Pluto like?**

- a) Covered by a sea of boiling water
- b) Covered with ice and rocks
- c) Covered with an icy ocean

**6: How many moons have scientists discovered orbiting Pluto?**

- a) 22
- b) 10
- c) 5

**7: What is the name of Pluto's largest moon?**

- a) Makemake
- b) Mickey
- c) Charon

**8: Who or what is Pluto named after?**

- a) A famous cartoon character
- b) A dog belonging to the scientist who discovered Pluto
- c) The Roman god of the underworld and afterlife

**9: When was Pluto discovered?**

- a) 1930
- b) 1890
- c) 2001

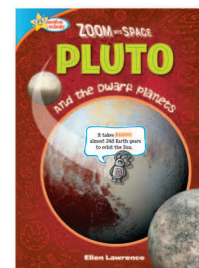
**10: Which statement is false?**

- a) Pluto is larger than Mars.
- b) Pluto used to be called a planet.
- c) Charon is about half the size of Pluto.

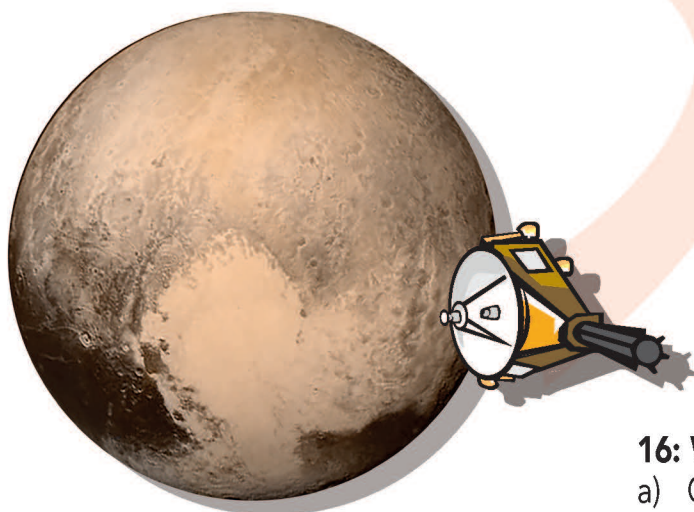
**11: Which of these statements is true?**

- a) *New Horizons* is a space probe launched in 1930.
- b) *New Horizons* is the telescope used to discover Pluto.
- c) *New Horizons* is a probe that reached Pluto in 2015.





9781649962089



**12: How many dwarf planets have been discovered so far?**

- a) 3
- b) 5
- c) 12

**13: Which dwarf planet is closest to the Sun?**

- a) Ceres
- b) Pluto
- c) Eris

**14: How big is Ceres?**

- a) It is almost as wide as the United States.
- b) It is bigger than Earth.
- c) It is almost as wide as Texas.

**15: What is the Kuiper Belt?**

- a) A group of asteroids between Mars and Jupiter
- b) A ring of moons circling Pluto
- c) An area where Pluto and other dwarf planets orbit the Sun

**16: Which of these statements is true?**

- a) Ceres is both a dwarf planet and an asteroid.
- b) Ceres orbits the Sun in the Kuiper Belt.
- c) Ceres is farther from the Sun than Pluto.

**17: What shape is the dwarf planet Haumea?**

- a) Egg-shaped
- b) Shaped like a lumpy potato
- c) Banana-shaped

**18: Which statement is true?**

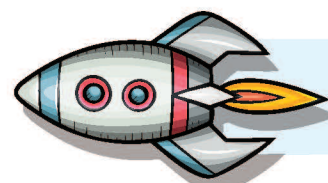
- a) Haumea has two known moons.
- b) Haumea has no moons.
- c) A year on Haumea lasts for 307 Earth years.

**19: Which statement is false?**

- a) The surface of Makemake is covered with ice.
- b) Makemake is a dwarf planet.
- c) A year on Makemake lasts for 283 Earth years.

**20: Which dwarf planet travels farthest from the Sun?**

- a) Pluto
- b) Eris
- c) Makemake



2: a 4: c 6: c 8: c 10: a 12: b 14: c 16: a 18: a 20: b  
1: b 3: b 5: b 7: c 9: a 11: c 13: a 15: c 17: a 19: c

**ANSWERS**